

By-Pass & Filter Feeders

By-Pass Feeders

Neptune By-Pass Feeders are a convenient method of introducing treatment chemicals into closed circulating water systems.

Neptune By-Pass Feeders are ideal for use with chilled water treatment such as air conditioning systems or hot water treatment in heating systems or large engine water jackets.

Neptune offers two styles of By-Pass Feeders: A vertical style with dish bottom in and a vertical style with dish bottom out.

Filters are available for system cleanup and monitoring.

A new high pressure cap rated to 300 psi is now available. The first closure improvement in over a decade.

Neptune
CHEMICAL PUMP CO., INC.

BY-PASS FEEDERS - VERTICAL STYLE

**DISH BOTTOM IN
MODEL VTF-10HP**

**DISH BOTTOM OUT
MODEL DBF-5HP**



**FILTER FEEDER
MODEL FTF-5HP**

Filter Feeders

The Neptune Filter Feeder combines chemical addition and high capacity filtering in one piece of equipment. It is a convenient way to introduce powders or liquid chemicals into hot or cold water closed circulating systems.

- Eliminates need for separate By-Pass Feeder and filter.
- Filtration can be achieved at the same time as chemical addition.
- Extended neck with top inlet allows simple installation of filter or dissolving basket.
- Filter bags are available in coarse, medium and fine grades. (Order separately.)
- Filter bags are quickly and easily replaced.

By-Pass Feeders

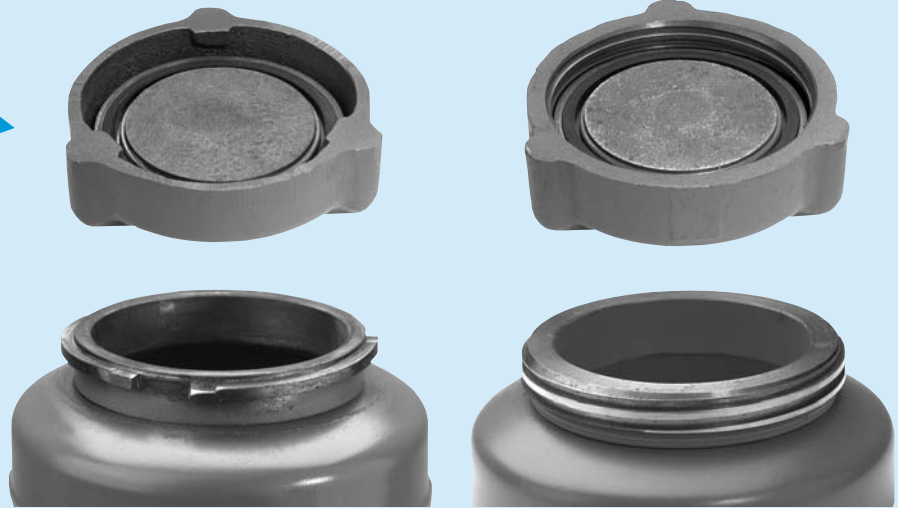
NEW!
The first closure improvement in over a decade!

Caps

All Neptune By-Pass Feeders offer the new style, quick opening, high pressure closure.

These closures offer better sealing with less force and eliminate the need for tools. Design binds cap tightly when under pressure making it necessary to bleed pressure from tank before removing cap.

Underside of cap which contacts liquid is epoxy-coated.



OLD STYLE CAP
Three lug, 1/2 turn design
rated to 200 psi.

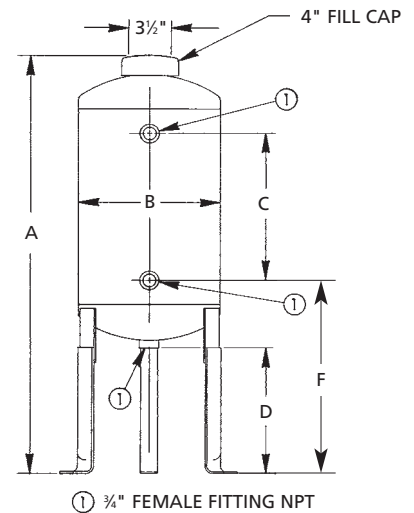
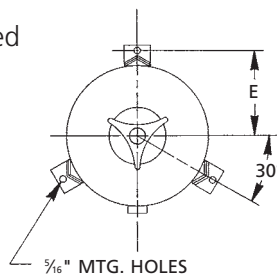
NEW HIGH PRESSURE CAP
Coarse thread, 2 1/2 turn design
rated to 300 psi.

Vertical Style - Dish Bottom Out

The "DBF" series features wide-mouth caps manufactured by Neptune. These caps utilize a square section "O" ring seal and will **close easily by hand**. Advantages of this series are demountable leg extensions and a **full bottom drain**. Optional Filter Bag Kit may be added.

"DBFC" models include a built-in support and mounting for a cartridge filter (order cartridge separately).

See page 3 for specifications.



MODEL NUMBER	FILTER	APPROX. CAPACITY	MAX. PRESSURE*	A	B	C	D	E	F	SHIP WEIGHT
DBF-2HP	Optional†	2 Gallons	300 psi	31 1/4"	6"	12 3/4"	8 5/8"	4 1/8"	13 1/4"	23 lbs.
DBFC-2	Cartridge	2 Gallons	300 psi	31 1/4"	6"	12 3/4"	8 5/8"	4 1/8"	13 1/4"	23 lbs.
DBF-5HP	Optional†	5 Gallons	300 psi	29 3/4"	10"	10 1/2"	8"	6 1/8"	13"	38 lbs.
DBFC-5	Cartridge	5 Gallons	300 psi	29 3/4"	10"	10 1/2"	8"	6 1/8"	13"	38 lbs.
DBF-10HP	Optional†	10 Gallons	300 psi	45 3/4"	10"	26 1/2"	8"	6 1/8"	13"	61 lbs.

*At 200°F Max.

†No filter included with base unit. Purchase optional filter bag kit.

Filter Bag Kits

Available for all "VTF" and "DBF" models up to 10 gallons. Kit includes bag, bag frame, tubing and connectors. The addition of a filter bag allows the By-Pass Feeder to function simultaneously as a side stream filter. (A clean bag is rated at approximately 30 microns.) Cannot be used with VTF & DBFC models.

VTF-2HP with filter bag kit installed

MODEL	FOR USE ON
FBK-2	VTF-2HP, DBF-2HP
FBK-5	VTF-5HP, DBF-5HP
FBK-10	VTF-10HP, DBF-10HP

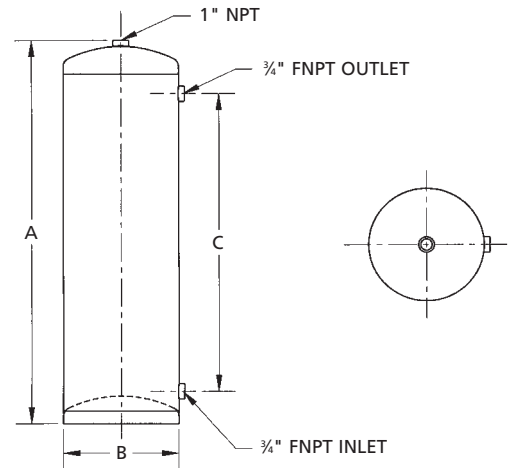
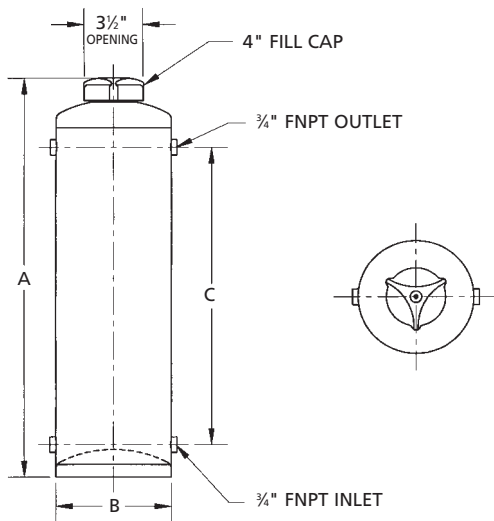
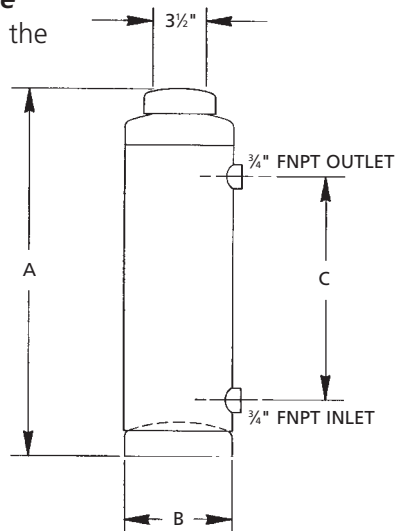


(bag frame shown in front of bag for clarity only)

Vertical Style - Dish Bottom In

The "VTF" series is the most popular and economical of the by-pass feeders available from Neptune. The series uses the same wide mouth **easy close** caps described in the "Dish Bottom Out" style. Optional Filter Bag Kit may be added.

"VTFC" models include a built-in support and mounting for a cartridge filter (order cartridge separately).



Four Fitting Models

MODEL NUMBER	APPROX. CAPACITY	MAX. PRESSURE*	A	B	C	SHIP WEIGHT
VTF-2X4HP†	2 Gallons	300 psi	21 1/4"	6"	12 3/4"	23 lbs.
VTF-5X4HP†	5 Gallons	300 psi	19 3/4"	10"	10 1/2"	37 lbs.

*At 200°F Max. †No filter included with base unit. Purchase optional filter bag kit.

Feeder Bodies

MODEL NUMBER	APPROX. CAPACITY	MAX. PRESSURE*	A	B	C	SHIP WEIGHT
VTF-2-1	2 Gallons	300 psi	20"	6"	12 3/4"	23 lbs.
VTF-5-1	5 Gallons	300 psi	18"	10"	10 1/2"	37 lbs.

*At 200°F Max.

Specifications - All Models

- Working pressure: to 300 PSI max. at 200°F
- Tank shell:
 - 2 gallon unit – 11 gauge steel
 - 5 gallon unit – 10 gauge steel
 - 10 gallon unit – 10 gauge steel
 - 12 gallon unit – 10 gauge steel
- Tank heads:
 - 2 gallon unit – 11 gauge steel
 - 5 gallon unit – 9 gauge steel
 - 10 gallon unit – 9 gauge steel
 - 12 gallon unit – 9 gauge steel
- Cap: cast iron with Buna N "□" ring. Wide mouth, easy open/easy close.

Standard Models

MODEL NUMBER	FILTER	APPROX. CAPACITY	MAX. PRESSURE*	A	B	C	SHIP WEIGHT
VTF-2HP	Optional†	2 Gallons	300 psi	21 1/4"	6"	12 3/4"	23 lbs.
VTFC-2	Cartridge	2 Gallons	300 psi	21 1/4"	6"	12 3/4"	23 lbs.
VTF-5HP	Optional†	5 Gallons	300 psi	19 3/4"	10"	10 1/2"	37 lbs.
VTFC-5	-----	Use Model DBFC-5 On Opposite Page		-----	-----	-----	-----
VTF-10HP	Optional†	10 Gallons	300 psi	35 3/4"	10"	26 1/2"	60 lbs.
VTF-12HP	Optional†	12 Gallons	300 psi	42"	10"	32 3/4"	68 lbs.

*At 200°F Max.

†No filter included with base unit. Purchase optional filter bag kit.

Cartridge Filter Units

Models "VTFC" and "DBFC" include a built-in support and mounting for a cartridge filter. (Order cartridge separately.)

Cartridge filter modification cannot be installed in the field.

PART NO.	DESCRIPTION
107290	5 Micron Pleated Filter
107287	20 Micron Pleated Filter

**VTFC-2 with
cartridge filter
installed**



**Filter
Assembly**



Filter Feeders

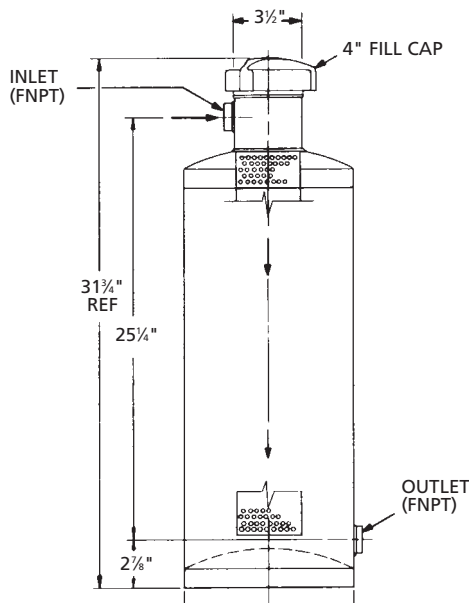


Features

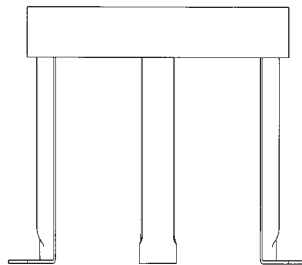
- Stainless steel dissolving basket holds and fully supports the filter bag inside (order bag separately).
- Ring-top bags feature handles for easy removal.
- Model FTF-5150HP features oversize 1½" inlet and outlet connections. Can be used for system cleanup with high volume pumps where high flow rates are desired for fast clean-up or flush-out prior to start-up.
- "CL" Models feature a welded base to allow bolting to the floor or other mounting surface. Four holes for ¾" bolts are provided on each Anchor Bolt Plate.

See page 3 for specifications.

MODEL FTF-5HP

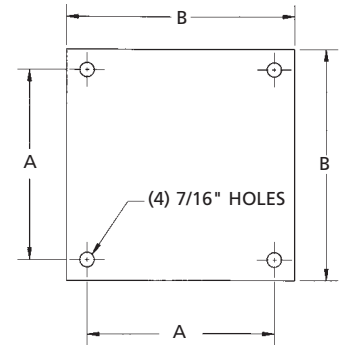


ALL MODELS



FTF-LEGS

Optional Leg Set with anchor bolts fits Models FTF-5HP and FTF-5150HP. Elevates feeder 9". Order "FTF-LEGS".



ANCHOR BOLT PLATE FOR "CL" MODELS

MODEL FTF-2CL



Filter Bags

All bags fit any "FTF" model.

STAINLESS STEEL BASKET

FILTER BAG

PART NO.	TYPE	QUANTITY	DESCRIPTION
107026	Ultra Fine	Pkg. of 1	1-micron ring-top bag
106453	Fine	Pkg. of 1	5-micron ring-top bag
107289	Medium	Pkg. of 1	20-micron ring-top bag
107231	Coarse	Pkg. of 1	50-micron ring-top bag

MODEL NUMBER	APPROX. CAPACITY	MAX. PRESSURE*	DIAM.	CONN. SIZE	ANCHOR BOLT PLATE A	ANCHOR BOLT PLATE B
FTF-2HP	2½ gals.	300 psi	6"	¾" FNPT	—	N/A —
FTF-2CL	2½ gals.	300 psi	6"	¾" FNPT	5¾"	7"
FTF-5HP	7½ gals.	300 psi	10"	¾" FNPT	—	N/A —
FTF-5CL	7½ gals.	300 psi	10"	¾" FNPT	10¾"	12"
FTF-5150HP	7½ gals.	300 psi	10"	1½" FNPT	—	N/A —
FTF-5150CL	7½ gals.	300 psi	10"	1½" FNPT	10¾"	12"

*At 200°F Max.

Neptune
CHEMICAL PUMP CO., INC.

P.O. Box 247 • Lansdale, PA 19446-0247
Tel: 215-699-8700 • Fax: 215-699-0370
Toll-Free Tel: 1-888-3NEPTUNE (1-888-363-7886)
Toll-Free Fax: 1-800-255-4017
Web Site: <http://www.neptune1.com>
E-mail: pump@neptune1.com

SOLD BY: